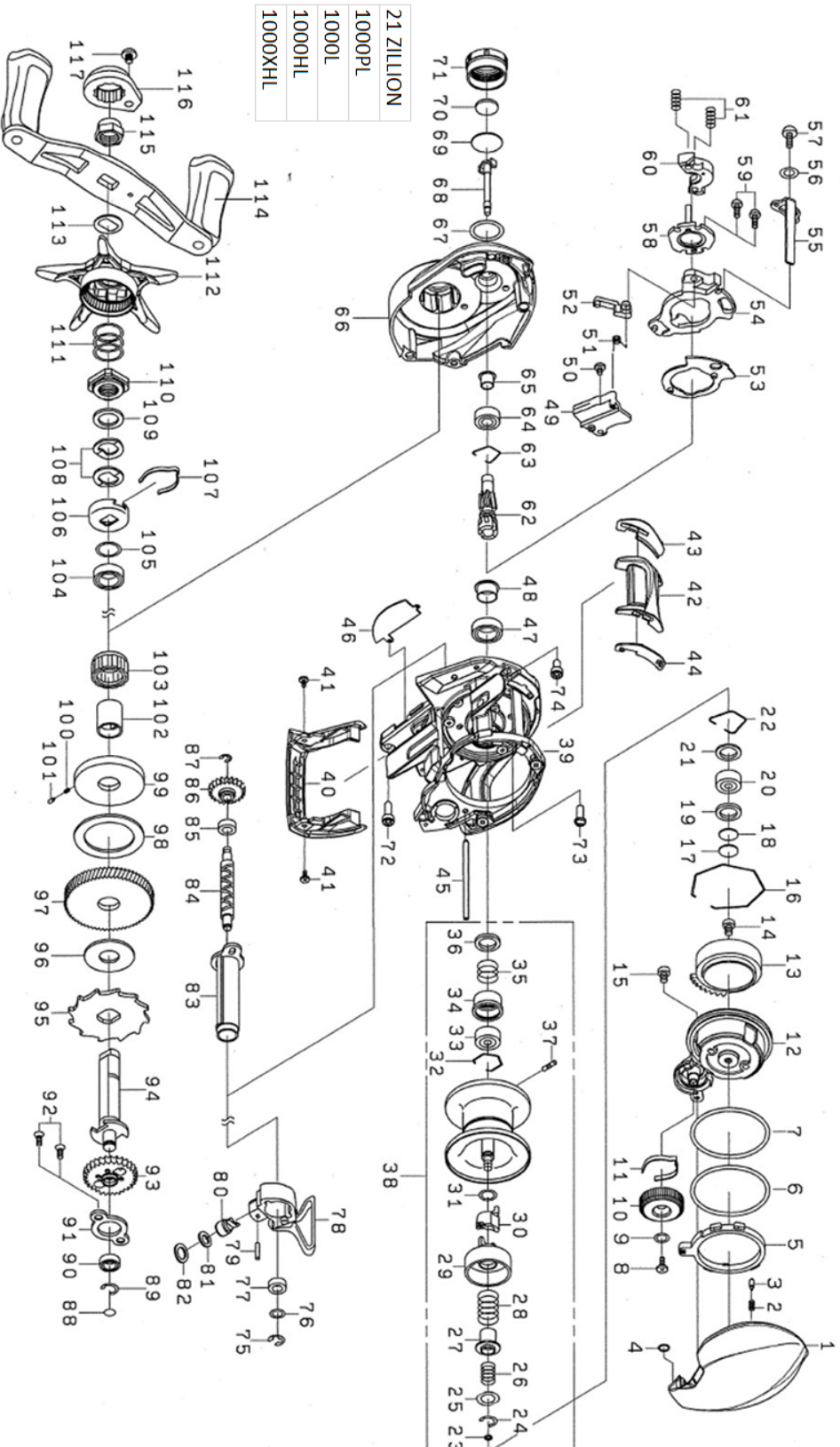




21 ZILLION SV (G)

Feel Alive.

Please quote by part number, not key number when ordering.
spares@daiwaaustralia.com.au PH: (02) 8644 8644



REEL NAME	MGFT CODE	KEY NO	PARTS CODE	DESCRIPTION
21 ZILLION SV (G) TW100HL		1	6M054501	RIGHT SIDE PLATE
21 ZILLION SV (G) TW100HL		2	6J631901	LEVER PLATE SPRING
21 ZILLION SV (G) TW100HL		3	6J286301	LEVER PLATE PIN
21 ZILLION SV (G) TW100HL		4	6J197901	RIGHT SIDE PLATE O RING
21 ZILLION SV (G) TW100HL		5	6M049001	LEVER PLATE (A)
21 ZILLION SV (G) TW100HL		6	6J286101	LEVER PLATE (B)
21 ZILLION SV (G) TW100HL		7	6J645201	LEVER PLATE (C)
21 ZILLION SV (G) TW100HL		8	6G940402	BRAKE DIAL SCREW
21 ZILLION SV (G) TW100HL		9	6H159201	BRAKE DIAL WASHER
21 ZILLION SV (G) TW100HL		10	6M053601	BRAKE DIAL
21 ZILLION SV (G) TW100HL		11	6H663401	BRAKE DIAL SPRING
21 ZILLION SV (G) TW100HL		12	6M054601	SET PLATE
21 ZILLION SV (G) TW100HL		13	6M054701	MAGNET HOLDER
21 ZILLION SV (G) TW100HL		14	6H666002	SET PLATE SCREW (A)
21 ZILLION SV (G) TW100HL		15	6G939303	SET PLATE SCREW (B)
21 ZILLION SV (G) TW100HL		16	6J315701	MAGNET HOLDER RETAINER
21 ZILLION SV (G) TW100HL		17	63757404	RS SPOOL ADJUST WASHER (A)
21 ZILLION SV (G) TW100HL		18	63757411	RS SPOOL ADJUST WASHER (B)
21 ZILLION SV (G) TW100HL		19	6G185101	RS SPOOL ADJUST WASHER (C)
21 ZILLION SV (G) TW100HL		20	6G511503	RS BALL BEARING
21 ZILLION SV (G) TW100HL		21	6G703201	RS BALL BEARING O RING
21 ZILLION SV (G) TW100HL		22	6F032201	RS BALL BEARING RETAINER
21 ZILLION SV (G) TW100HL		23	6H770601	SPOOL SHAFT O RING
21 ZILLION SV (G) TW100HL		24	63208002	BRAKE CUP SPRING RETAINER
21 ZILLION SV (G) TW100HL		25	6J497001	BRAKE CUP SPRING WASHER
21 ZILLION SV (G) TW100HL		26	6M042201	BRAKE CUP SPRING (A)
21 ZILLION SV (G) TW100HL		27	6M165701	BRAKE CUP COLLAR (A)
21 ZILLION SV (G) TW100HL		28	6M042001	BRAKE CUP SPRING (B)
21 ZILLION SV (G) TW100HL		29	6M055001	BRAKE CUP
21 ZILLION SV (G) TW100HL		30	6M041701	BRAKE CUP COLLAR (B)
21 ZILLION SV (G) TW100HL		31	63755202	BRAKE CUP WASHER
21 ZILLION SV (G) TW100HL		32	6J149501	SPOOL BALL BEARING RETAINER
21 ZILLION SV (G) TW100HL		33	6G511503	SPOOL BALL BEARING
21 ZILLION SV (G) TW100HL		34	6H232201	SPOOL BALL BEARING COLLAR
21 ZILLION SV (G) TW100HL		35	6M052601	SPOOL BALL BEARING SPRING
21 ZILLION SV (G) TW100HL		36	6M052501	SPOOL BALL BEARING WASHER
21 ZILLION SV (G) TW100HL		37	6H358801	SPOOL PIN
21 ZILLION SV (G) TW100HL		38	6Z025976	SPOOL ASSY
21 ZILLION SV (G) TW100HL		39	6M207601	FRAME
21 ZILLION SV (G) TW100HL		40	6M041001	FRONT COVER
21 ZILLION SV (G) TW100HL		41	6H531508	FRONT COVER SCREW
21 ZILLION SV (G) TW100HL		42	6M048401	CLUTCH LEVER
21 ZILLION SV (G) TW100HL		43	6M040501	CLUTCH LEVER PLATE (L)
21 ZILLION SV (G) TW100HL		44	6M040601	CLUTCH LEVER PLATE (R)
21 ZILLION SV (G) TW100HL		45	6M041101	STABILIZER BAR
21 ZILLION SV (G) TW100HL		46	6M047901	FRAME PLATE
21 ZILLION SV (G) TW100HL		47	6G431004	PINION BALL BEARING (A)
21 ZILLION SV (G) TW100HL		48	6J764501	PINION BALL BEARING (A) COLLAR
21 ZILLION SV (G) TW100HL		49	6M048301	CLUTCH TRIP LEVER PLATE (A)
21 ZILLION SV (G) TW100HL		50	6H531508	CLUTCH TRIP LEVER PLATE (A) SCREW
21 ZILLION SV (G) TW100HL		51	6M060601	CLUTCH TRIP LEVER PLATE SPRING
21 ZILLION SV (G) TW100HL		52	6J638601	CLUTCH TRIP LEVER
21 ZILLION SV (G) TW100HL		53	6M048201	CLUTCH CAM PLATE (A)
21 ZILLION SV (G) TW100HL		54	6M048001	CLUTCH CAM
21 ZILLION SV (G) TW100HL		55	6M048101	CLUTCH BAR
21 ZILLION SV (G) TW100HL		56	6M070001	CLUTCH BAR WASHER
21 ZILLION SV (G) TW100HL		57	6B360406	CLUTCH BAR SCREW
21 ZILLION SV (G) TW100HL		58	6H659101	CLUTCH CAM PLATE (B)
21 ZILLION SV (G) TW100HL		59	6B032904	CLUTCH CAM PLATE (B) SCREW
21 ZILLION SV (G) TW100HL		60	6M157501	YOKE

REEL NAME	MGFT CODE	KEY NO	PARTS CODE	DESCRIPTION
21 ZILLION SV (G) TW100HL		61	6J313901	YOKE SPRING
21 ZILLION SV (G) TW100HL		62 97	6Z025978	PINION DRIVE GEAR SET
21 ZILLION SV (G) TW100HL		63	6H448401	PINION BALL BEARING RETAINER
21 ZILLION SV (G) TW100HL		64	6B358608	PINION BALL BEARING (B)
21 ZILLION SV (G) TW100HL		65	6J724601	PINION BALL BEARING (B) COLLAR
21 ZILLION SV (G) TW100HL		66	6M053901	LEFT SIDE PLATE
21 ZILLION SV (G) TW100HL		67	6J279701	ZERO ADJUSTER KNOB O RING
21 ZILLION SV (G) TW100HL		68	6G931001	PINION SHAFT
21 ZILLION SV (G) TW100HL		69	6H161001	ZERO ADJUSTER WASHER (A)
21 ZILLION SV (G) TW100HL		70	6B175503	ZERO ADJUSTER WASHER (B)
21 ZILLION SV (G) TW100HL		71	6J279601	ZERO ADJUSTER KNOB
21 ZILLION SV (G) TW100HL		72	6G945811	LEFT SIDE PLATE SCREW (A)
21 ZILLION SV (G) TW100HL		73	6G040802	LEFT SIDE PLATE SCREW (B)
21 ZILLION SV (G) TW100HL		74	6G945818	LEFT SIDE PLATE SCREW (C)
21 ZILLION SV (G) TW100HL		75	63205901	WORM SHAFT RETAINER
21 ZILLION SV (G) TW100HL		76	6B411703	WORM SHAFT WASHER
21 ZILLION SV (G) TW100HL		77	6G720001	WORM SHAFT BUSHING (A)
21 ZILLION SV (G) TW100HL		78	6M054201	LEVELWIND
21 ZILLION SV (G) TW100HL		79	6J740201	LEVELWIND PIN
21 ZILLION SV (G) TW100HL		80	6J740101	PAWL
21 ZILLION SV (G) TW100HL		81	6M161301	PAWL WASHER
21 ZILLION SV (G) TW100HL		82	6G252202	PAWL O RING
21 ZILLION SV (G) TW100HL		83	6M048901	WORM SHIELD
21 ZILLION SV (G) TW100HL		84	6J243601	WORM SHAFT
21 ZILLION SV (G) TW100HL		85	6G720001	WORM SHAFT BUSHING (B)
21 ZILLION SV (G) TW100HL		86	6M048801	WORM GEAR
21 ZILLION SV (G) TW100HL		87	6B339801	WORM GEAR RETAINER
21 ZILLION SV (G) TW100HL		88	6G099801	DRIVE SHAFT WASHER
21 ZILLION SV (G) TW100HL		89	63208002	DRIVE SHAFT RETAINER
21 ZILLION SV (G) TW100HL		90	6G466202	DRIVE SHAFT BALL BEARING
21 ZILLION SV (G) TW100HL		91	6J281101	DRIVE SHAFT PLATE
21 ZILLION SV (G) TW100HL		92	6G297002	DRIVE SHAFT PLATE SCREW
21 ZILLION SV (G) TW100HL		93	6M048601	DRIVE SHAFT GEAR
21 ZILLION SV (G) TW100HL		94	6M048501	DRIVE SHAFT
21 ZILLION SV (G) TW100HL		95	6H660901	RATCHET
21 ZILLION SV (G) TW100HL		96	6E708901	DRIVE GEAR WASHER
21 ZILLION SV (G) TW100HL		62 97	6Z025978	PINION DRIVE GEAR SET
21 ZILLION SV (G) TW100HL		98	6H359001	DRAG WASHER
21 ZILLION SV (G) TW100HL		99	6J740501	KEY WASHER
21 ZILLION SV (G) TW100HL		100	6M025201	DRAG CLICK SPRING
21 ZILLION SV (G) TW100HL		101	6J566201	DRAG CLICK PIN
21 ZILLION SV (G) TW100HL		102	6G011401	ONEWAY CLUTCH COLLAR
21 ZILLION SV (G) TW100HL		103	6J540401	ONEWAY CLUTCH
21 ZILLION SV (G) TW100HL		104	6B861704	HANDLE BALL BEARING
21 ZILLION SV (G) TW100HL		105	6B553801	HANDLE BEARING WASHER
21 ZILLION SV (G) TW100HL		106	6F028203	CLICK SPRING HOLDER
21 ZILLION SV (G) TW100HL		107	6F032401	CLICK LEAF SPRING
21 ZILLION SV (G) TW100HL		108	61508901	DRAG SPRING WASHER
21 ZILLION SV (G) TW100HL		109	6H929501	STAR DRAG WASHER
21 ZILLION SV (G) TW100HL		110	6J141002	STAR DRAG METAL
21 ZILLION SV (G) TW100HL		111	6J011901	STAR DRAG SPRING
21 ZILLION SV (G) TW100HL		112	6J140005	STAR DRAG
21 ZILLION SV (G) TW100HL		113	6F576601	HANDLE PLATE
21 ZILLION SV (G) TW100HL		114	6M125001	HANDLE ASSEMBLY
21 ZILLION SV (G) TW100HL		115	6G793310	HANDLE NUT
21 ZILLION SV (G) TW100HL		116	6J625401	HANDLE LOCK PLATE
21 ZILLION SV (G) TW100HL		117	6G835503	HANDLE LOCK PLATE SCREW